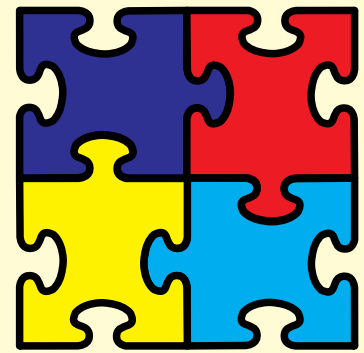
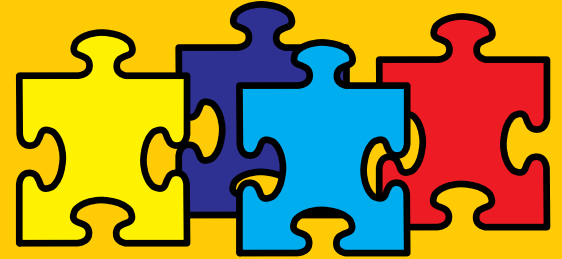


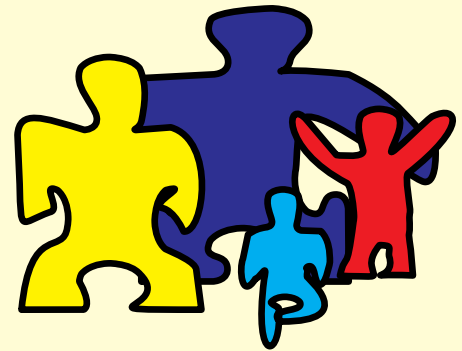
Hey Humans!
You keep trying to solve
this autism puzzle thing.
It's not going to work.



First of all, we're real people.
You can't put our heads wherever
you think they should go.
We stand on our own two feet.



We don't fit into your cookie
cutter notions of autism.
We come in all shapes and sizes...



...and colors. We're not uniform.
There's no one single picture
of an autistic person.
There are millions of us, all unique.



Autistic people are people just like you.
Well, not really just like you.
We're different. That's a good thing.
Diversity is good. Different is good.

